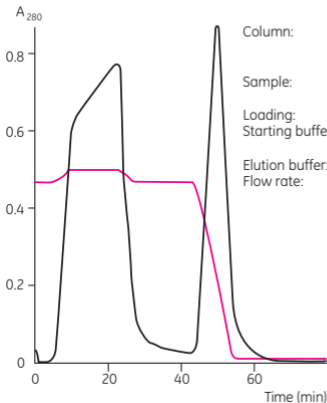


Phenyl Sepharose 6 Fast Flow (high sub)を用いた モノクローナル抗体 IgG₁ の単離



Column: XK16/20, 20 ml gel volume packed with Phenyl Sepharose 6 Fast Flow (high sub)
Sample: Harvest from hollow fiber containing 4 % fetal calf serum
Loading: 4 mg MAb/ml gel
Starting buffer: 0.6 M (NH₄)₂SO₄ + 20 mM K₂HPO₄, pH 7.0
Elution buffer: 20 mM K₂HPO₄, pH 7.0
Flow rate: 10 ml/min